

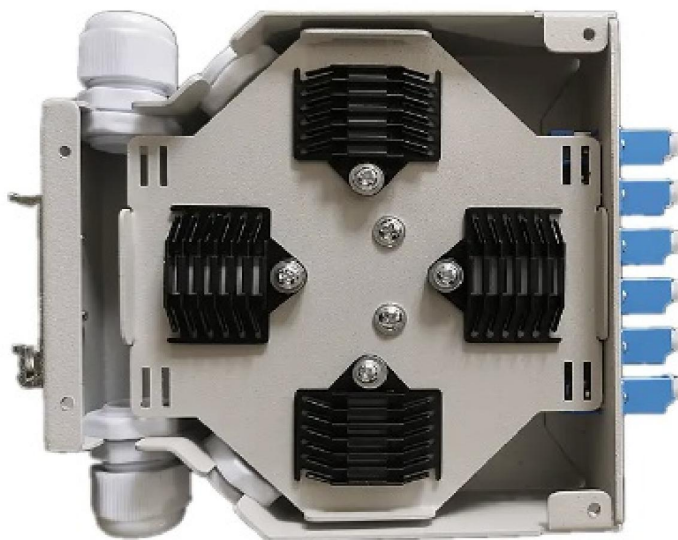


Ftth Optical Terminal Din Rail Mount Box

Production Description

The industrial din-rail mount box is designed for either to support direct termination or splicing of the fibers. The materials used for the patch panel is of high quality anodized aluminum with natural finishes making it light weight and compact in size.

Classification



Feature

Designed to save space specially when mounted within enclosures or cabinet with other din rail mount equipment.

The patch Panel can be loaded with 12 SC duplex adapters.

Application

Suitable for Pigtail, ribbon and bunch cable connect distribution for wall-mounted FTTH applications ,Telecommunications,CATV etc.

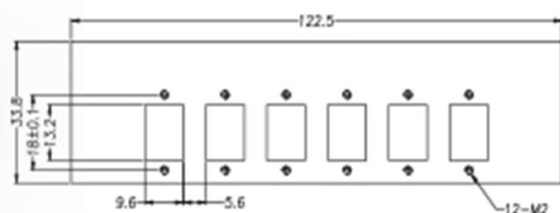
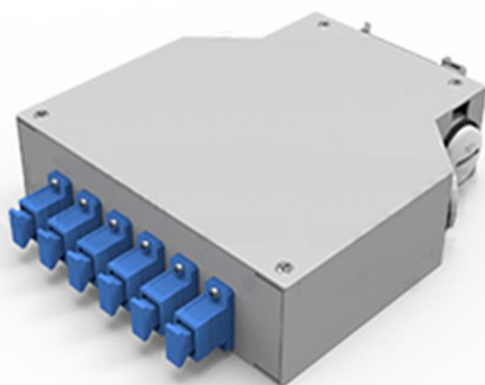
Up to 12 ports SC-Duplex adapters Din-rail mounting Space-saving installation

IP20 protection 2x cable entries (PG 11 cable gland)

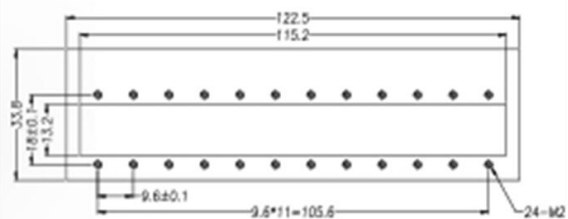
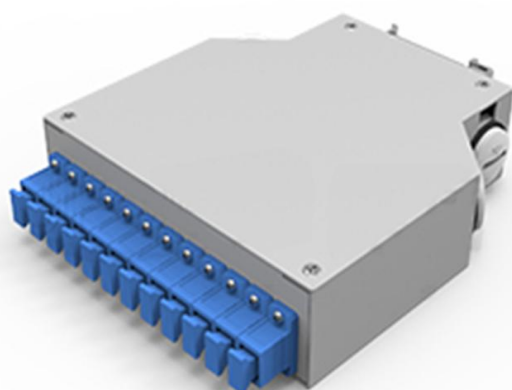
Grey color(RAL7035) -40°C to 80°C (-40°F to 176°F) operating temperature

Adapter Panel Ordering Information

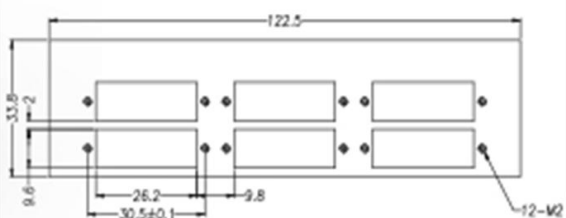
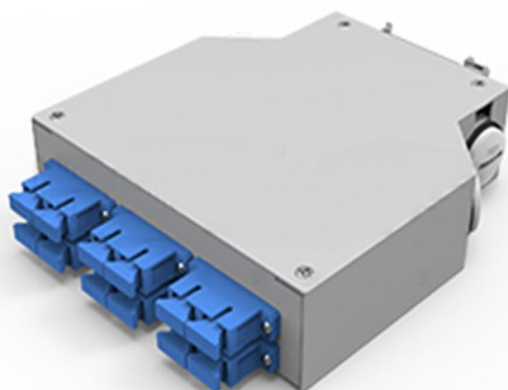
SC 6C Simplex


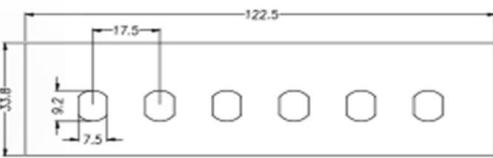


SC 12C Simplex



SC 12C Duplex



FC 6C Small-D		
FC 12C Small-D	