



Rack Mount Sliding Fiber Patch Panel

General Description

Fiber optic patch panel/fiber terminal box/ODF is an integrated unit for fiber management, Trochi offer wall mounted fiber optic patch panel and rack mounted fiber optic patch panels, these equipment function is to fix and manage the fiber optic cables inside the box as well as provide protection. There different models to fit for 4 6 8 12 core fiber, 24 core fiber, 36 core fiber, 48 core fiber, 72 core fiber, 96 core fiber, 144 core fiber applications. They can be with different adapter interface including the SC, ST, FC, LC MTRJ, etc. related fiber accessories and pigtails are optional.

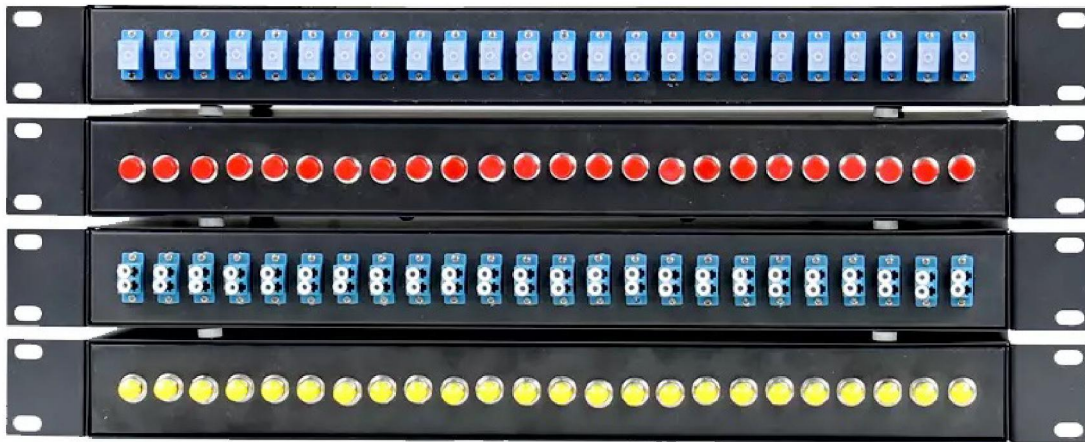
Features

- 1) Standard size, light weight and reasonable structure
- 2) Splice tray inside changeable
- 3) 19-inch standard size, light in weight and robust structure
- 4) Suitable for ribbon and single fiber
- 5) Various panel plate to fit different adapter interface
- 6) Front mark on the plate is easy for identification and operation
- 7) 24C, 36C, 48C, 96C, 144C optional, with or without fiber optic pigtails and adapters
- 8) Easy for management and operation

Specification

Product name	fiber optic patch panel	Ports	24 or customized
Material	Cold Rolled Steel / SPCC	Dimension	19" 1U/2U/3U/4U...
Type	Sliding Fixed, rack type	Application	FTTH
Connector Type	SC ST duplex LC FC	Thickness	1.0 /1.2 mm
Operating temperature	-40~+60	Splice tray	12/24 core/tray

Connector Type



Detailed Pictures

