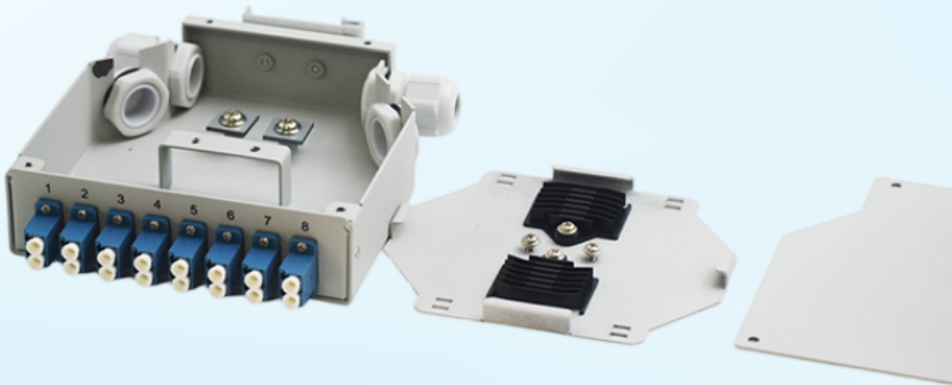


Product Description

DIN Rail Fiber Optic Terminal Box is designed for fiber termination and fusion splicing. Made of powder-coated aluminum with a rugged, compact design, it features a DIN rail clip for easy mounting. Compatible with ST, SC, and LC adapters, this box supports mini-network terminal distribution, providing secure connections for optical cables, patch cords, and pigtails.

Features

- * Light weight, small size, easy installation.
- * Suitable for DIN rail application.
- * Provide splice protection of fiber cable and pigtails.
- * Made of cold-rolled steel, electrostatic Powder spraying.
- * Adapter port is optional for SC, FC, ST or LC duplex adapters.



Specification

Product Name	DIN Rail Metal Box
Ports	6ports 8port 12 ports
Use	pole mounting or wall mounting
Material	Metal
Color	Grey
Size	133x136.6x35mm
Single gross weight	2kg
Install with	LC SC FC ST
IP Grade	IP20
Working Temperature	-40°C ~ +85°C