

# Optical Fiber Distribution Box FL-H010

## 1. Description:

The equipment is used as a termination point for the feeder cable to connect with drop cable in FTTX communication network system. The fiber splicing, splitting, distribution can be done in this box and meanwhile it provides solid protection and management for the FTTX network building



## 2. Features:

- (1) Total enclosed structure.
- (2) Material: PP+GF, wet-proof, water-proof, dustproof, anti-aging, protection level up to IP65.
- (3) Clamping for feeder cable and drop cable, fiber splicing, fixation, storage distribution... etc all in one.
- (4) Cable, pigtails, patchcord: all running through own path without disturbing each other, cassette type SC adaptor .installation, easy maintenance.
- (5) Distribution panel can be flipped up, feeder cable can be placed in a cup-joint way, easy for maintenance and installation.
- (6) Cases can be wall mounted. Overhead or column mounted, suitable for indoor and outdoor use.

## 3. Specification:

Material	PP + GF
Max Capacity	Splice 16 Fibers
	PLC Splitter 1pcs of 1x16
Nos of Adaptor	16pcs of SC(max)
Weight	1.7kg
Color	Black
Size	290*185*108mm

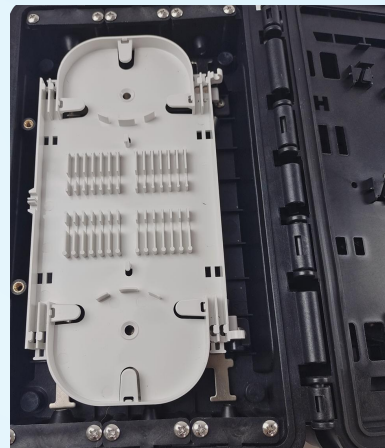
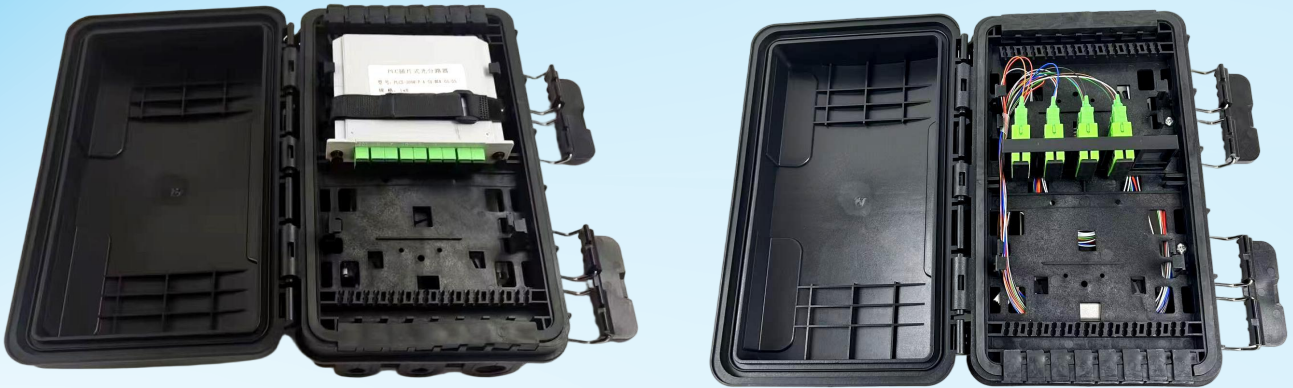
## 4. Overall Dimension:



## 5. Application:

- (1) Installation method: wall hanging or overhead
- (2) FTTH pre-installation and filed installation.

## 4. Overall Dimension:



Poleconfigurationdiagram

## 7. Accessories:

heat shrink tubing	8
setscrew	2
screw	2
plastic strapping	6
Hook	2
Throat band	6
Winding tube	1
Soft film	2
Anti-electric tape	1

