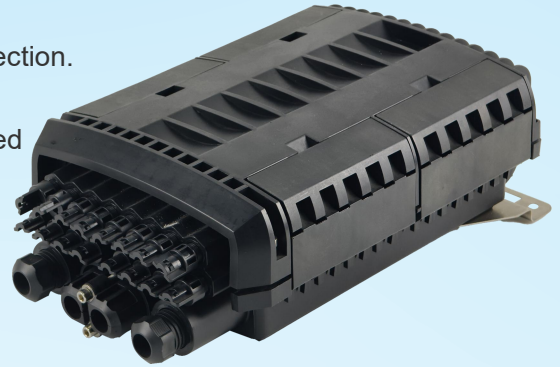


Data Sheet of FL-H041

Optical Fiber Distribution Box FL-H041

1. Description:

The box is mainly used for optical fiber connection and protection. This kind of box is suitable for the connection of overhead, pipe and buried straight and branch. The box body and base are sealed with hoops and rubber. The closure casing is made of quality engineering plastics, and of good performance of anti-erosion against acid and alkali salt, anti-aging, as well as smooth appearance and reliable mechanical structure. The mechanical structure is reliable and has the performance of resisting wild environment and intensive climate changes and serious working environment. The splice trays inside the closure are turn-able like booklets, and have adequate curvature radius and space for winding optical fiber to make sure the curvature radius for optical winding 40 mm. Each optical cable and fiber can be operated individually. The product can be opened again and reused after installation.

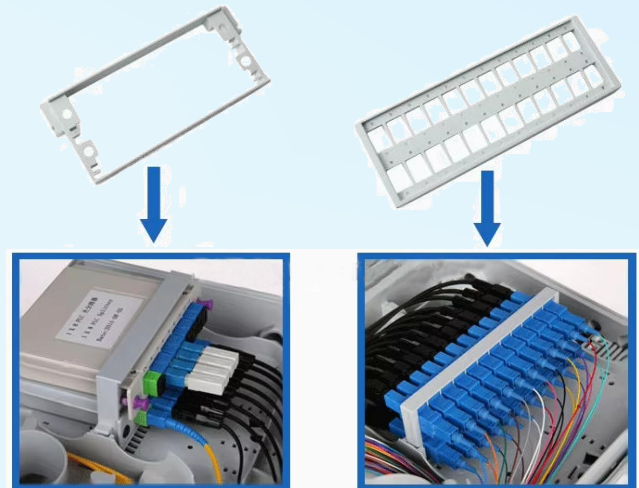


2. Features:

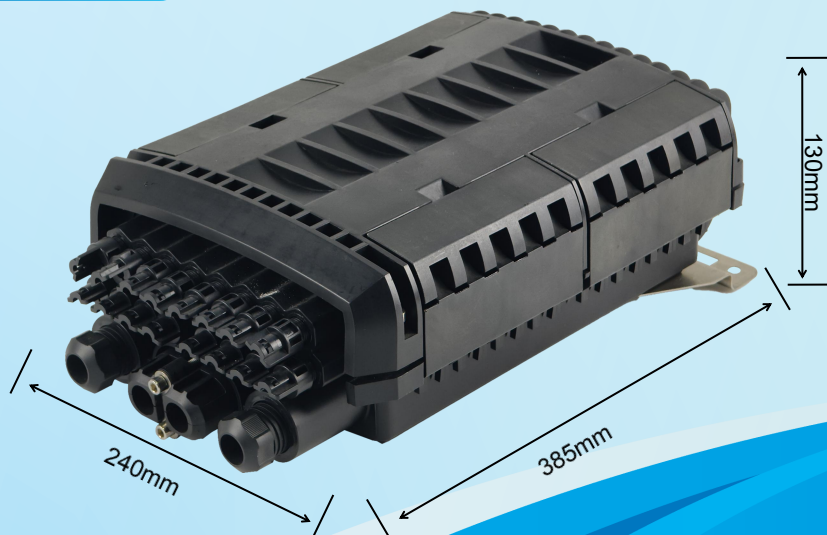
- 1、 Excellent mechanical properties.
- 2、 Excellent sealing performance.
- 3、 The product has multiple reuse and capacity expansion functions.
- 4、 It has the capability to protect the optical fiber connector from environmental impact.
- 5、 Good corrosion resistance, compressive resistance and tensile strength.

3. Specification:

Items	Specification
Item No	FL-H041
Size	385*240*130mm
Material	PP+GF
Waterproof	IP68
Ports	4 inlet 16 outlet
Weight	4.5kg
Package	Carton Box
Use	FTTH
No.of Fiber	16core/24core
Color	Black (or as your requirements)
Operating Temperature	-40~60° C
Optical connector	SC FC LC



4. Overall Dimension:



5. Product display:



6. Application:

