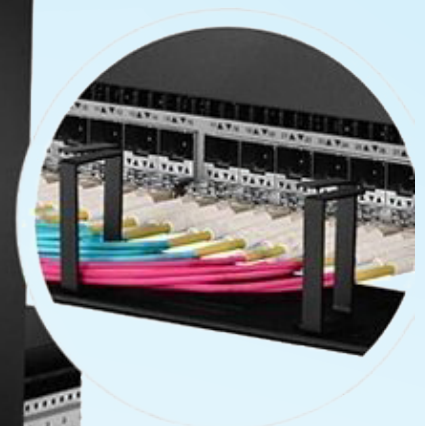


Description:

MPO Breakout cable, a cost-effective alternative to time-consuming field termination, is designed for high-density fiber patching in data centers which need space saving and reduce cable management troubles.



1x MPO connector for adapter panel



6xLC, 8xLC or 12xLC Connector

The MPO/MTP single mode fan-out, breakout cables are ideal connection to patch panels and data distribution routing. These can be made with 12 fiber MTP connectors, 24 Fiber MTP connectors, 48 Fiber MTP connector variations.

MPO Fanout Hybrid Patch Cord is mainly used to connect QSFP and SFP modules, or MPO and the LC connectors. Normally OD of the fan out cables is 2.00mm.

MPO patch cord is used for signal transmission, both sides are MPO connectors. Common cables are round type, and fiber counts are 12/24/36/48/72/144cores.

MPO to LC Breakout cables are your best choice for high density fiber networks. It's specifically designed for fast ethernet, fiber channel, data center and gigabit ethernet applications. This 12 Fiber harness cable is used for connecting (6) SFP+ into a MPO adapter panel and MPO trunk.



Characteristics:

1. Constructed of high-quality
2. Push-pull latching.
3. Easy assembly, no crimp tool needed
4. Alignment achieved with high precision guide pins
5. Ferrules are available for SM Standard, SM Low Loss /MM Standard, MM Low Loss.
6. Cable are available for Jacket ribbon, Bare ribbon, Round mini Cable.
7. High Return Loss; Low Insertion Loss.
8. High precision guide pins for exact alignment
9. Compliant to IEC61754-7 Compliant; Telcordia GR-1435-CORE

Application:

1. Data communication network
2. Optical system access network
3. Storage area network fiber channel
4. High density architectures
5. Short distance connections within a single rack or cabinet.

Production lines



cable production line



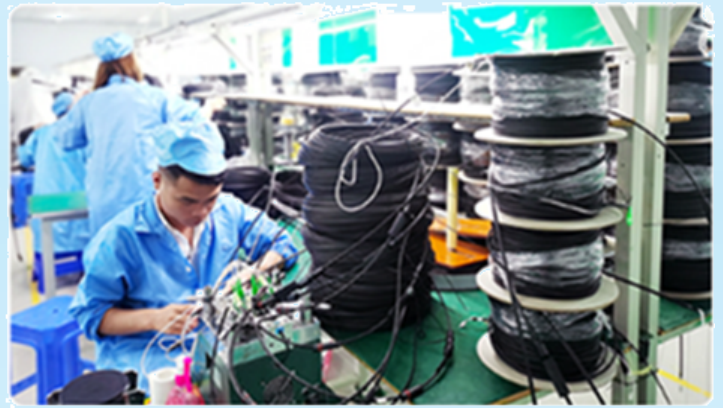
patch cord production line



connector production line



FTTA cable production line



FTTH cable production line



MPO cable production line



PLC production line



WDM production line