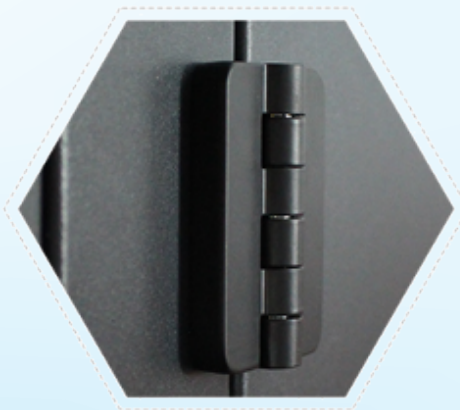


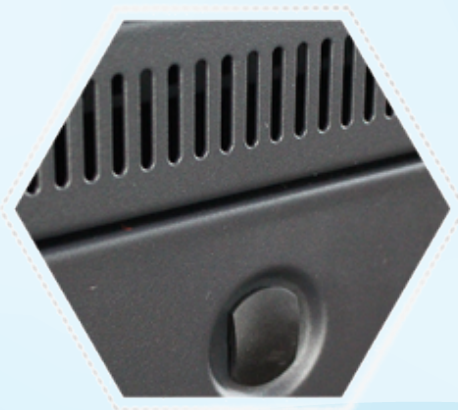
Feature:

- 1.Welded frame, stable structure with precise craftsmanship;
- 2.Single section, compatible with 19 " standard equipments;
- 3.Tempered glass front door with over 180 turning degree;
- 4.Removable Side panel, easy to enstall and maintain (lock optional);
- 5.Cable entry on the top cover and bottom panel with knock—out plate ;
- 6.L—shaped mounting profile , easy to adjustable on the mounting rail;
- 7.Fan cutout on the top cover, easy to install fan;
- 8.Installing back panel, easy to fix on the wall;
- 9.Various accessories for option

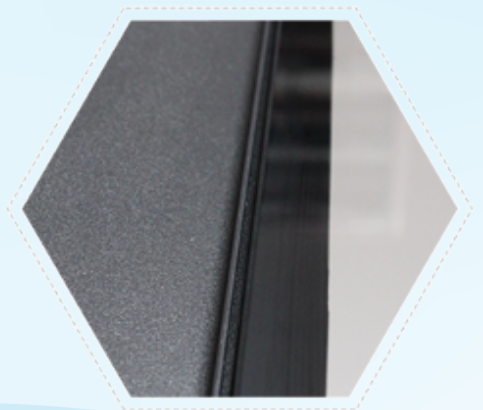
Detailed pictures:



Frame hinges



VENTED EDGE



Tempered glass

Advantadges:



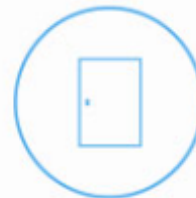
Good heat dissipation



Strict material selection



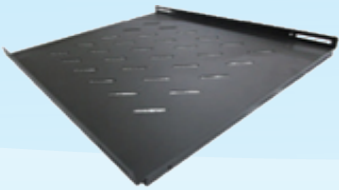
Be even quality



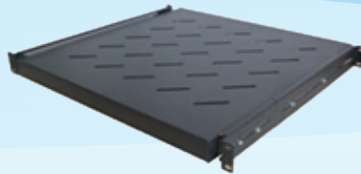
Support customization



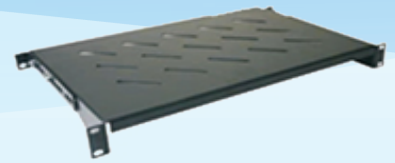
Optional accessories:



Fixed Shelf



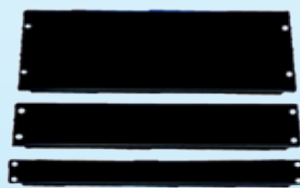
Sliding Shelf



Adjustable Fixed Shelf



Fan Plate

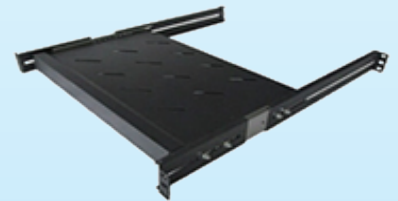


A:4U

B:2U

C:1U

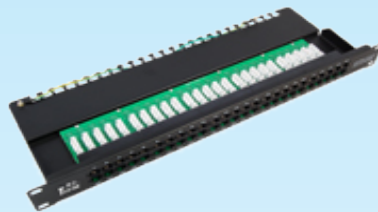
Bank Panel



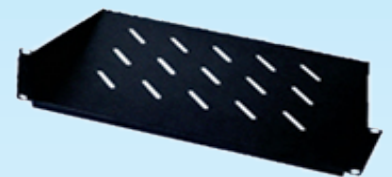
Keyboard Tray



Cable Manager



Patch Panel



Cantilever Shelf