

Description:

Ftth Optical Terminal Din Rail Mount Box

Features:

Cold-roll steel, electrostatic painting
Suitable for different adapters: FC, SC, ST, LC ...
2pcs cable entry/exit ports; 12pcs pigtail entry/exit ports
Max. 12pcs adapters can be loaded
Integrated splice holders (fusion splices)
IP20 protection
Rear or aside DIN rail fixation
2x rear entries (PG 11 cable gland)
Grey color (RAL 7035)
Dimensions : 140x 129 x 37 mm

Application:

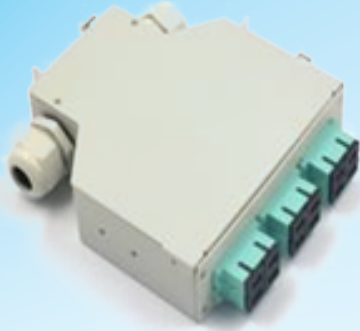
Suitable for Pigtail, ribbon and bunch cable connect distribution
Used for wall-mounted applications
Used in FTTH, Telecommunications, CATV etc.

Specification:

Products:	din rail box
Connector Type:	LC SC FC ST
Cores:	4 Fiber to 24 Fibers
Cable type:	SM MM OM3 OM4
Material:	Cold rolled steel
Color:	WHITE
Package:	Carton box
Product Keywords	din rail mounting adapter

Specification:

Fiber Optic DIN Rail Terminal Boxes/Splice Box/Patch Panel



6 SC Duplex DIN Terminal Box



4 ST Simplex DIN Splice Box



6 SC Duplex DIN Patch Panel



6 SC Simplex DIN Terminal Box



6 LC Quad DIN Splice Box



12 E2000 DIN Patch Panel



12 LC Duplex DIN Terminal Box



12 ST Simplex DIN Splice Box



12 SC Simplex DIN Patch Panel