

Features:

- ABS material used ensures the body strong and light.
- Water-proof design for outdoor uses.
- Easy installations: Ready for wall mount – installation kits provided.
- Adapter slots used – No screws and tools needed for installing adapters.
- Ready for splitters: designed space for adding splitters.
- Space saving! Double-layer design for easier installation and maintenances
- Lower layer for splitters and over length fiber storage.
- Upper layer for splicing, cross-connecting and fiber distribution.
- Cable fixing units provided for fixing the outdoor optical cable.
- Protection Level: IP65.
- Accommodates both cable glands as well as tie-wraps
- Lock provided for extra security

Model and Configuration:

Model NO	Description	Max Capacity			Installation Size (mm)	Mounting Way	Cable Way
		SC	LC	PLC			
FDB-8C	Splitter Box	8	16	8 / 16	173 * 136	Wall Mount	Waterproof gland

Features:

Working temperature	-40℃~+85℃
Relative humidity	≤85% (+30℃)
Atmospheric pressure	70Kpa~106Kpa
Insertion loss	≤0.2db
UPC return loss	≥50db
APC return loss	≥60db
Life of insertion and extraction	>1000 times

Application:

Strong compatibility and wide application

Widely used in intelligent broadband, fiber to home systems, and security monitoring systems



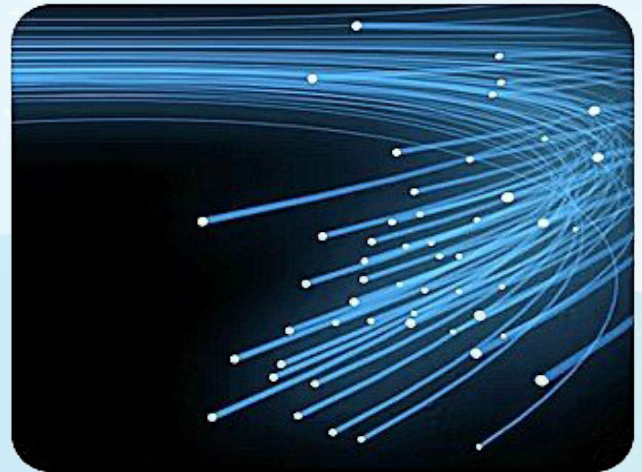
Optical fiber emergency repair



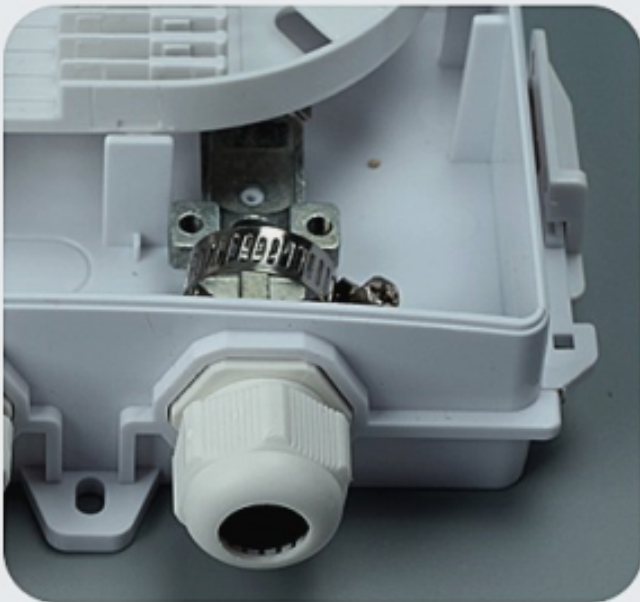
Large LAN



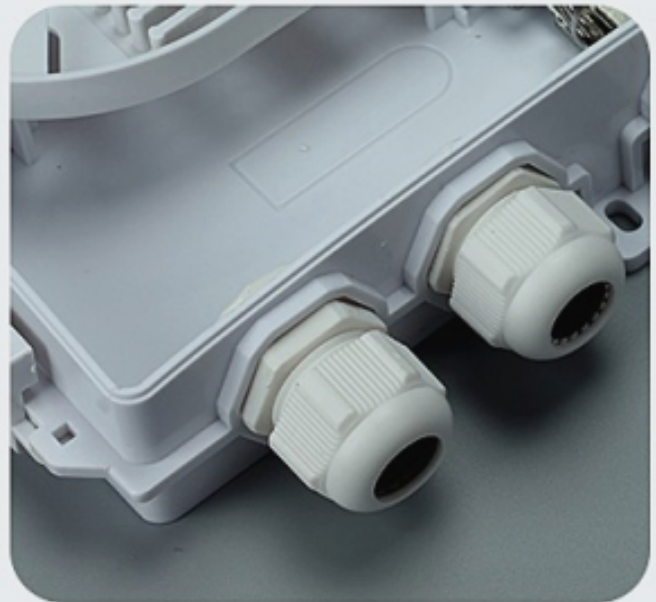
Security monitoring



Optical fiber data transmission



Optical fiber inlet



Optical fiber outlet